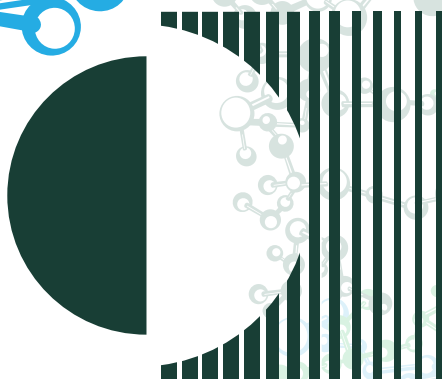


MICHIGAN STATE  
UNIVERSITY



# Charles **Drew** Science Scholars

COLLEGE OF NATURAL SCIENCE

## Program Handbook



[DrewScholars@cns.msu.edu](mailto:DrewScholars@cns.msu.edu)



[facebook.com/DrewScholars](https://facebook.com/DrewScholars)



[@DrewScholars](https://twitter.com/DrewScholars)

[DrewScholars.msu.edu](https://DrewScholars.msu.edu)



This handbook outlines the Charles Drew Science Scholars program at Michigan State University, including its creation, mission, services, and policies under which it operates. It is intended to enable students to fully understand and reap full benefit of the support services offered by the program. It also clearly outlines the expectations of citizenship in the Drew community and MSU at all stages of their educational journey.

The mission of Charles Drew Science Scholars is to support the all-around successful college experience of its students. The benefits of academic advising, academic coaching & support, career advising & resources, and the living and learning community compel students to demonstrate the program's three pillars: Academic Achievement, Career Exploration & Preparation, and Community Engagement & Service.

## DREW SCHOLARS

CALLED TO HONOR THE LEGACY OF DR. CHARLES R. DREW

PHYSICIAN • SCIENTIST • HUMANITARIAN



“There must always be the continuing struggle to make the increasing knowledge of the world bear fruit in increased understanding and the production of human happiness.”

—Dr. Charles Drew

Dear Students and Parents,

Welcome to the Charles Drew Science Scholars Program at Michigan State University!

For over thirty years the Drew program has helped over a thousand students maximize their college experience and education. In Drew, the student is the center of our focus. Success to us means that our students have all-around good health, emotionally and socially, as well as academic success.

As much as Drew is an academic support program, it is also a community with a distinct culture that is predicated on a set of core values—the earnest pursuit of Academic Achievement, Career Exploration & Preparation, and Community Engagement & Service. These values give Drew its unique identity, and, in combination with the support components, make the Drew student experience truly special.



Best regards,  
*Jerry Caldwell*  
Jerry Caldwell, PhD  
Director

Charles Drew Science Scholars..... 6

Drew Student Circle of Support ..... 8

Academic Advising ..... 9

Academic Advising Syllabus ..... 9

Drew Approach to Advising & Focus on Freshmen Year ..10

Academic Coaching & Support.....11

Career Advising .....13

Drew Scholar Citizenship.....14

Living and Learning Community.....16

Drew Scholar-Resident.....16

The Drew Difference .....18

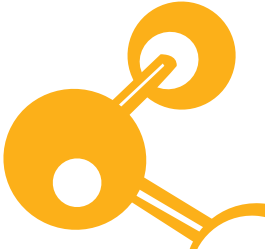
Highlighted Registered Student Organizations .....19

Frequently Asked Questions.....20

LLC Agreement ..... 22

List of Majors in College of Natural Science..... 25

Team Drew: Providing Comprehensive Support..... 27



The Charles Drew Science Scholars program is named to honor the academic and scientific legacy of Dr. Charles Richard Drew, an eminent physician and researcher. Dr. Drew was a pioneer in blood plasma preservation and was a major contributor to the advancement of blood banking in the United States.

Dr. Drew earned his undergraduate degree from Amherst College in 1926 and two degrees from McGill University in 1933 – Doctor of Medicine and Doctor of Surgery. In 1940 he also earned a Doctor of Science (D.Sc.) from Columbia University. (This is the equivalent of a Ph.D. in the sciences.) Dr. Drew's work significantly contributed to advances in storage, preservation, and clinical application of whole blood and blood components.

Dr. Drew was a trailblazer in science and medicine, earning numerous accolades and often being the first African-American to do so on numerous occasions, from earning the D.Sc. at Columbia to serving as an examiner on the American Board of Surgery. His teaching, guidance, and work have been instrumental in influencing an uncountable number of lives. Dr. Drew died in 1950 at the age of 45 from injuries sustained in an automobile accident, leaving behind a legacy of commitment to academic excellence that is at the heart of the Charles Drew Science Scholars.

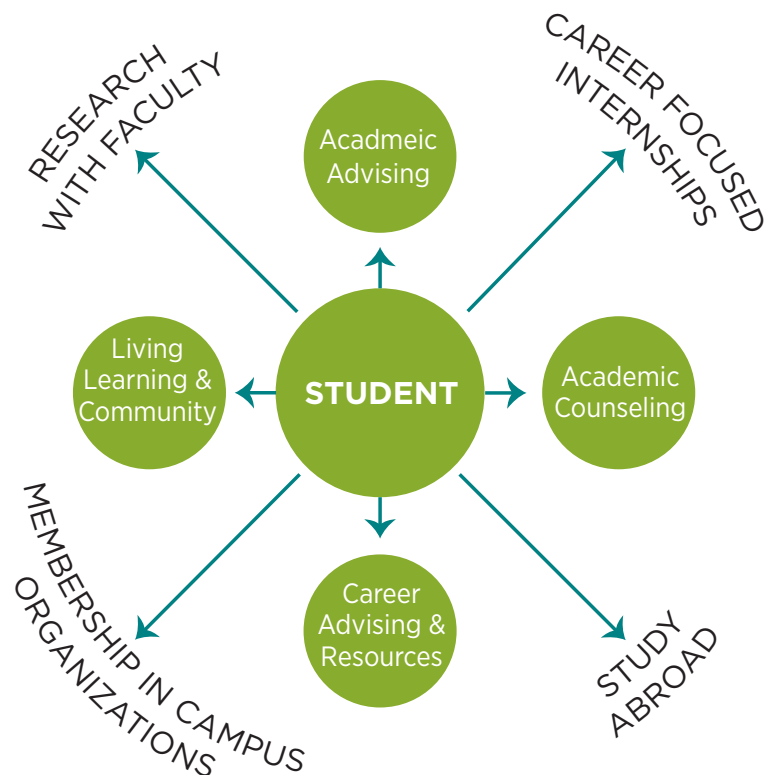


Charles Drew Science Scholars is a comprehensive academic support program within the College of Natural Science (CNS). Over its long history of more than 30 years at MSU, Drew Scholars (formerly the Charles Drew Enrichment Laboratory) has been instrumental in helping over a thousand MSU alumni successfully complete degrees at the University.

The role of the Charles Drew Science Scholars Program is to provide academic assistance and support for high achieving undergraduate students pursuing degrees in CNS (biological sciences, physical sciences, and mathematics). Drew also provides support for individuals interested in professional health and science careers such as medicine, veterinary medicine, dentistry, and pharmacology. Program emphasis has been on those who are historically underrepresented in science and mathematics fields. However, Drew is an inclusive multi-cultural and multi-racial community of science students that continues to pursue the goal of “Transforming the Face of Science” to address the nation’s challenge of increasing the science, technology, engineering, and mathematics (STEM) talent pool and workforce.

To meet this challenge, Drew Scholars is structured around programmatic components that are designed to help freshmen and sophomore students smoothly transition to college and establish a strong academic foundation for continued success. The components include: specialized academic advising; academic support and coaching; career advising; and a freshman living and learning residential program.

## The Drew Student Circle of Support



The Drew program is designed to provide students with a socially and psychologically supportive environment, while simultaneously encouraging and preparing them to avail themselves of the greater enrichment resources and opportunities at the university. Each element of the Drew Student Circle of Support is described on the pages that follow.

## Academic Advising

Academic advising is performed primarily by Drew's academic advisor. However, the program's director and associate director may serve in an advising capacity based on load. Drew's holistic approach to advising utilizes developmental and intrusive advising principles that aid students throughout their entire college experience.

The mission of academic advising is to assist students with developing an educational plan that is consistent with their life goals through:

- Recognizing and appreciating the individual differences of students
- Encouraging students to have a sense of self-awareness and accountability
- Empowering and informing students so that they can fully explore their options
- Encouraging students to make well-intentioned and strategic decisions

Below is a general outline of the Drew advising syllabus, which includes the topics for plans and discussions that comprise the Drew Difference in academic advising.

ADVISING PERIODS	GOALS PER SEMESTER	# OF VISITS
YEAR 1	S1: Transitioning and acclimating to college life S2: Personal independence and development	3 each semester
YEAR 2	S1: Academic engagement and exploration S2: Complete assimilation into the college environment	2 each semester
YEAR 3	S1: Curriculum enhancement S2: Post college preparation	2 each semester
YEARS 4-6	S1: Capstone year S2: Transitioning out of college to career or professional/graduate school	2 each semester



## Drew Approach to Advising

A goal of the Drew advising program is that it be delivered timely and comprehensively. The advising practices and policies are also designed to provide early alerts for students experiencing difficulty. Advising is made available to all Drew students, regardless of their class status, but freshman and sophomore students have priority; juniors and seniors typically seek advice from their major advisors.

Freshmen are required to have a minimum of three advising sessions each semester their first year. During the fall semester, each session is scripted to address the results of one or more of the advising plans or assessments described above. Students are required to schedule their first advising session within the first three weeks of the term. During this session they review their LASSI, Learning Styles Index, and Time Management Plan. Students also receive help with creating a 4-5 year curriculum plan. The second session is scheduled between term weeks seven and nine in order to include discussion of students' 5th week Academic Progress Report (APR) and begin discussing summer plans. The third required session generally takes place after 11-week APRs have been received to continue review students' APRs and to review and confirm their spring semester course schedule—and revise as needed.

The three required spring semester advising sessions allow for continued discussion of academic progress, follow up with summer plans, and course planning. They also allow Drew to maintain close communication with students prior to their departure for the summer.

## Academic Coaching & Support

The Academic Coaching Program (ACP) provides supplemental instruction in the core subject areas of science (includes biology, chemistry, and physics), mathematics, and writing. Gateway or introductory courses are heavily emphasized in academic coaching. The purpose of ACP is to enhance knowledge and understanding of fundamental concepts by assisting students in the development of cognitive skills through interactive, coaching sessions. By signing a coaching agreement which outlines expectations and guidelines of ACP, Drew Scholars and Academic Coaches agree to engage in weekly two-hour sessions, which are typically conducted once or twice a week. In addition to sound instruction, ACP fosters the development of effective study skills and test-taking strategies. Coaching sessions are facilitated by individuals who have a minimum of a Bachelor's degree and mastery of the subject area in which they serve as an Academic Coach.

The mission of ACP is to improve the scholastic performance of participating Drew Scholars by providing structured sessions and constructive feedback on their academic progress. The goal is to develop participants into self-reliant learners with the ability to solve problems using critical thinking skills. The objective is to have all participants achieve a vast improvement in understanding of course material. We believe if participants attend coaching sessions on a regular basis, attend class and participate in the corresponding recitation period, and study alone and in groups, then successful course completion is achievable.

Additional academic support from Drew scholars occurs in the form of reserved sections of mathematics courses and seminar companion courses to the yearlong biological sequence of courses (BS 161 and BS 162).

The mathematics courses are coordinated by the Drew mathematics director. These courses are taught for seven hours a week and are conducted within the framework of comprehensive Mathematics Learning System (MLS) which is directed at the total preparation of students for future study of mathematics and science courses. The major components of the MLS include: concept review sessions, group study sessions, instructor/student conferences and tutorial sessions. Instructors, graduate assistants, undergraduate teaching assistants and peer tutors, all work together and operate an integrated system which considers the guidance and needs of the students in all phases of its functioning.

The Biological Science companion courses are taught by the course instructors in sections designated as specifically for Drew Scholars. This format provides an opportunity for students to receive instruction from the course instructor that addresses students' individual concerns and content challenges. More specifically, the companion course is focused on helping students do well in both the lecture and its corresponding laboratory. The instructors work with students on lecture & lab homework assignments, help prepare students for tests, and extra time is spent with difficult course concepts. Drew students who enroll in this course along with the appropriate lecture and lab can enjoy getting their homework in these classes completed long before the due dates and have the assignments checked over before they turn them in. Students also get to practice knowledge and test-taking skills before each exam. The small class size of the seminar allows for a more individualized enriching learning experience.

## Career Advising

Charles Drew Science Scholars career advising program is designed to foster students' professional development. To do this, intense focus is placed on students' self-realization, encouraging students to reflect on themselves, their abilities, interests, coursework, co-curricular activities, etc. We utilize themes that press students to connect lessons of the college classroom to the world beyond campus. By bringing together coursework, research experience, and any other academic pursuits our students will have developed a record that ultimately translates into a strong and highly impressive resume. This program is integrated into the curriculum of the Drew sophomore seminar course (NSC 200) that focuses on career exploration (career options for science degree holders) and preparation. Supporting curricular activities include students writing resumes and personal statements. Students are made aware of career related opportunities via weekly speaker presentations and/or the weekly Drew electronic newsletter

The mission of career advising is to help students identify and prepare for a career path that fulfills their personal and professional aspirations. Advisors assist students with finding and gaining access to opportunities that complement and enrich their classroom learning through real-life hands-on experiences and that further promote their professional development. These include resume-building experiences such as internships, faculty-mentored research, employment, and scholarships.



## Drew Scholar Citizenship

The success of the Charles Drew Science Scholars program depends largely on students' active participation in program activities and internalization of the expectations and commitment set by the program. It is our goal that our students who give full participation will build skills, develop attributes, and learn content necessary to successfully complete a science-based degree as they work toward becoming well-rounded professionals.

Full participation includes but is not limited to the following:

### Completing basic program requirements

- Maintain a 2.5 cumulative and science grade point average (GPA)
- Enroll in and satisfactorily complete NSC seminar(s) (3.0 or higher)
- Enroll in and satisfactorily complete Drew mathematics course (when applicable)
- Meet academic advising requirements (3 per semester as freshman and two per semester as upperclassman)
- Meet career advising requirement (once a semester)
- Participate in academic coaching, tutoring, or help rooms (as needed)
- Maintain regular professional communication with Drew Scholars
- Participate in Drew Student Organization (DSO) or other student organization as general body member
- Act as a positive, supportive, and contributing member within LLC (Fr. Only)
- Attend LLC programming and meetings (Fr. only)

### Engaging in scholarly and/or professional development activities

- Maintain at least 3.25 science and cumulative GPA
- Enroll in NSC 203 (when applicable)
- Participate in professional student organizations
- Participate in research and/or internships
- Attend Drew- and MSU-sponsored workshops (resume, essay writing, identifying summer opportunities, etc.)
- Attend/ Present at professional conferences
- Attend department and college colloquia

### Engaging regularly in interpersonal development activities EXAMPLES:

- Participate in professional student organization as a committee chair/elected officer
- Attend/Present at professional conferences
- Serve on a planning committee or advisory board

### Demonstrating intrapersonal awareness EXAMPLES:

- Participate in 1-2 service projects each semester
- Participate in professional student organization as a committee chair/elected officer
- Demonstrate a commitment to service over time (e.g. planning service projects, sitting on advisory boards, etc.)

### Demonstrating commitment to Drew Science Scholars EXAMPLES:

- Maintain regular communication with Drew Scholars beyond seminar enrollment
- Represent Drew Scholars to campus and larger communities
- Actively participate in Drew-sponsored activities (e.g. workshops, guest speakers, etc.)



## Living and Learning Community

The mission of the Drew Living and Learning Community (LLC) is to facilitate a smooth transition to college by giving students a built-in community that can lead to connections with peers and formation of study groups. This dimension of Drew integrates students' out-of-class experiences with their academic lives.

All freshmen Drew students are required to live in Rather Hall as part of the Drew LLC. Students in the LLC will participate in regularly scheduled group activities outside of the freshman seminar and in addition to general residence hall functions. A student is not required to attend all activities, but must attend a pre-determined number of "Drew-approved" activities to remain in good standing with the program.

In addition to the community that the LLC facilitates, the residential experience provides an integral and natural support system for Drew freshmen. When possible, upper level Drew students serve as Resident Assistants (RAs) on the Drew floor to provide a peer mentor who can relate to the academic and social experiences of Drew freshmen. Drew RAs are carefully selected upper level students who have demonstrated a commitment to academic excellence and an investment in Drew Science Scholars.

### Drew Scholar-Resident

Living in a residence hall is exciting and challenging. Students will learn to tolerate and accept others as they grow and develop. During the residence experiences, students will face situations that challenge their intellectual, emotional, and physical selves. They will be exposed to lifestyles, beliefs, attitudes, and values that may be different from their own. This adds to the learning experience.

Each person is unique. Each person thinks differently because of his/her background and experiences. These differences should not be a source of conflict. Talking about these differences early may help to avoid problems later.

Resident Bill of Rights (as established by Student Life and REHS)

1. Read and study without undue interference in one's room. Unreasonable noise and other distractions inhibit the exercise of this right.
2. Sleep without undue distraction from noise, roommate's guests, or other distractions.
3. Expect that a roommate will respect one's personal belongings.
4. Keep a clean, sanitary, and orderly environment in which to live.
5. One should have free access to one's room and facilities without pressure from one's roommate(s).
6. Personal Privacy is a must.
7. Host a guest with the expectation that guests are to respect the rights of the host's roommate and other residents.
8. Redress of grievances, and participation in conflict resolution. Drew staff members are available for assistance in this process.
9. Be free from intimidation, physical and/or emotional harm.
10. Expect reasonable cooperation in the use of shared items (e.g., telephone, bathroom, closet).
11. Address all concerns, in a timely manner, to Drew staff.

## The Drew Difference

While the Drew office staff enthusiastically stands behind the merits and value of Drew Science Scholars, our students usually say it best . . .

“I could not have made it through Orgo  
(Organic Chemistry) without coaching!”  
—Drew Scholar, Pre-Med

“Being in Drew qualified me to apply for a  
scholarship and writing coaching helped  
me write an essay that earned me \$1500!”  
—Drew Scholar in Kinesiology

“My first year in Drew, I did not take advantage of all the  
program had to offer but after I started taking advantage  
of all the program had to offer, I know being a Drew  
Scholar helped me succeed outside of class and made  
me a competitive applicant to medical school”  
—Drew Scholar and early admit  
to MSU College of Medicine



## Highlighted Registered Student Organizations

Charles Drew Science Scholars is affiliated with student organizations that underscore the ideal of academic success, commitment to community, and professional development. Those most closely affiliated are listed below:

### Drew Student Organization (DSO)

DSO is a student-led organization that is designed to build community among Drew Scholars through service and social activities. While the Drew office staff focuses on academic and professional support mechanisms, DSO has a primary focus of connecting all Drew scholars and creating a community of inclusiveness. DSO is also instrumental in executing Drew's third pillar of Community Engagement and Service.

### Minority Association of Pre-Medical Students (MAPS)

MAPS is an organization designed to help minority pre-professional health majors (pre-medical, public health, etc.) prepare for health-based professional graduate programs. MAPS is committed to supporting future under-represented minority health students, addressing the needs of underserved communities, and increasing the number of clinically excellent, culturally competent, and socially conscious physicians.

“Drew was like family... We studied  
together, did Intramural sports together  
and pushed each other to succeed”  
—Drew Scholar Alum,  
Pursuing PhD at MSU

“I fell in love with research after a  
summer internship I found out  
about through Drew . . . now  
instead of getting an M.D. I  
want my Ph.D.”

## Frequently Asked Questions

### Does the Drew program offer scholarships or financial aid?

Drew is not a scholarship-granting program. However, our support services and corporate and research relationships help make students more competitive when they apply for scholarships.

### Are the students in the Drew program from diverse backgrounds?

Yes. Students come to the Drew program from a broad range of racial, ethnic, and socioeconomic backgrounds. A benefit of participation in Drew is the opportunity to learn from and work with students from many different backgrounds.

### Why was I invited to the Drew program?

You were invited to join the Drew program because of your high school record of accomplishment and your plan to pursue a degree program in the College of Natural Science and/or a career based in science and mathematics.

### Can I be part of other programs/colleges (R.I.S.E., honors college, Lyman Briggs, etc.) and still be in Drew?

Generally, yes, depending on the membership requirements of the other program(s). Many Drew students are members of other programs at Michigan State.

### What is the Drew Living & Learning Community, or LLC?

The Drew LLC is the residential component of the Drew program. It involves helping students continue their learning outside of the classroom. The LLC also provides students the opportunity to get to know each other better with the goal of forming mutually supportive social and academic networks.

### If I am in the Drew program where would I be housed?

The Drew program and its freshmen scholars are housed on the second floor of Rather Hall in the Brody neighborhood on the west side of the MSU campus.

### Am I required to live in Rather Hall on the Drew floor?

It is a program requirement that freshmen live in the Drew residential community (LLC) in Rather Hall, at least for their first year at MSU.

### Do I have to live on the Drew floor for all my years at MSU?

While freshmen are required to live in the Drew residential community, upperclassmen have the freedom to choose their living arrangements.

### Can I have a roommate that is not in Drew?

Yes, but it depends on space and availability. However, the roommate must be willing to reside in Rather Hall.

### What are the benefits of being in the Drew program?

There are many benefits of being a Drew Scholar. Drew offers its students many academic and social benefits. These include personalized advising, assistance with course planning and registration, academic coaching and tutoring, and help with securing professional internships. Our living and learning community connects students who share the same or similar academic, career, and social interests. The Drew program offers these benefits and resources in a supportive personalized environment. Our goal is to help all of our students have the best possible college experience.

### Can I join the Drew program even though I was not invited?

Yes. Any student meeting the program criteria can be considered for membership in Drew Science Scholars.

### Does Drew have a social media presence?

Yes. You can find us on Facebook (DrewScholars) and Twitter (@DrewScholars)

## LLC Agreement

Charles Drew Science Scholars is designed to maximize your academic, personal, and professional success at Michigan State University. The Drew Scholars staff will partner with you to help you achieve your goals and provide programs and services for you so that you will be able to fully experience the scope, scholarship, and scale of the University.

In order to receive the most benefit as a Charles Drew Science Scholar, you will be required to fulfill certain program obligations during your first two years as a College of Natural Science student. Drew Scholars will provide services to all students, but historically finds those with the most success fully participate in the program at a level that would be considered above minimum participation.

To confirm your understanding of the Drew Science Scholars program obligations, we ask that you read and sign the following agreement.

I recognize that as a member of the Charles Drew Living and Learning Community, I will be required to fulfill the following obligations:

- I will reside in Rather Residence Hall during my first year.
- I will attend at least \_\_\_\_ Drew approved activities during the first year, including residential programs, personal and professional development forums.
- I will follow all course scheduling recommendations of the Charles Drew Science Scholars staff during the first two years.
- I will work closely with Drew Scholars staff as I plan extra-curricular or part-time employment activities during the academic year.
- I will not pledge a fraternity or sorority during my first year.

- I will abide by all University policies (e.g. policies regarding use of illegal drugs, alcohol, etc.).
- I will participate in designated academic support activities during the first two years, including regularly scheduled academic coaching sessions and/or office hours.
- I will commit my best effort to all Drew Scholars activities.
- I will strive to maintain the integrity and standards of the Charles Drew Science Scholars Program.
- I will contribute my individual skills and strengths to the overall success of the Drew Scholars community.

### Outline of First and Second Year Participation Expectations

FIRST YEAR	SECOND YEAR
<b>Semester 1</b> Transitioning and acclimating to college life <ul style="list-style-type: none"><li>— Meet with Drew academic advisor a minimum of three times</li><li>— Complete each of the following by designated appointed time:<ul style="list-style-type: none"><li>• Blueprint for Graduation</li><li>• Learning and Study Strategies Inventory (LASSI) &amp; Learning Styles Index</li></ul></li></ul>	<b>Semester 1</b> Academic engagement and exploration <ul style="list-style-type: none"><li>— Meet with Drew academic advisor a minimum of three times</li><li>— Career exploration</li><li>— Graduate/professional school exploration</li><li>— Graduate/professional school entrance exam preparation and execution</li><li>— Resume/portfolio building</li></ul>
<b>Semester 2</b> Personal independence and development <ul style="list-style-type: none"><li>— Meet with Drew academic advisor a minimum of three times</li></ul>	<b>Semester 2</b> Complete assimilation into the college environment <ul style="list-style-type: none"><li>— Meet with Drew academic advisor a minimum of two times</li><li>— Resume/portfolio building</li></ul>

## Academic Expectations

- As a Drew LLC participant, I understand I must enroll in both the freshman and sophomore Drew seminars. Failure to enroll and successfully complete both seminars will result in review by the program staff and potential dismissal from the program.
- I understand I must maintain a term and cumulative and science GPA of at least 2.5 to remain in good standing. Receiving lower than a 2.5 GPA will result in probation with Drew Scholars.
- Should I earn a GPA that results in probation with Drew Science Scholars, I will follow program prescribed actions.
- Should I earn a GPA below 2.0, I will be placed on academic probation with the University, resulting in regular sessions with a Drew advisor to assist in the transition to a 2.0 GPA and I will follow prescribed actions.

*I acknowledge that I am signing up for the Charles Drew Science Scholars program in good faith, and that I will make an honest effort to meet the obligations outlined above. I understand that not meeting the obligations can result in a review by Drew staff regarding possible dismissal from Charles Drew Science Scholars.*

## Majors in the College of Natural Science

Actuarial Science – BS	Environmental Geosciences – BS
Astrophysics – BS	Genomics and Molecular Genetics – BS
Biochemistry & Molecular Biology/Biotechnology – BS	Geological Sciences – BS
Biochemistry and Molecular Biology – BS	Human Biology – BS
Biological Science – BS (Interdepartmental; Teaching majors only)	Mathematics – BA
Biomedical Laboratory – BS	Mathematics – BS
Chemical Physics – BS	Mathematics, Advanced – BA
Chemistry – BA	Mathematics, Advanced – BS
Chemistry – BS	Microbiology – BS
Clinical Laboratory Science – BS	Neuroscience – BS
Computational Mathematics – BA	Physical Science – BS (Interdepartmental; Teaching majors only)
Computational Mathematics – BS	Physics – BA
Earth Science – BS	Physics – BS
Environmental Biology/ Microbiology – BS	Physiology – BS
Environmental Biology/ Plan Biology – BS	Plant Biology – BS
Environmental Biology/ Zoology – BS	Statistics – BA
	Statistics – BS
	Zoology – BA
	Zoology – BS



## Office of the University Ombudsperson

Conflicts, disagreements and issues sometimes arise during the course of an academic program. After a student has exhausted the internal resources for resolving an issue, they may contact the Office of the University Ombudsperson.

The Office of the University Ombudsperson provides assistance to students, faculty, and staff in resolving University-related concerns. Such concerns include: student-faculty conflicts; communication problems; concerns about the university climate; and questions about what options are available for handling a problem according to Michigan State University policy. The University Ombudsperson also provides information about available resources and student/faculty rights and responsibilities. The office operates as a confidential, independent, and neutral resource. It does not provide notice to the University — that is, it does not speak or hear for the University.

Contact the University Ombudsperson at any point during an issue when a confidential conversation or source of information may be needed. The University Ombudsperson will listen to concerns, give information about university policies, evaluate the situation, and assist in making plans to resolve the conflict.

Contact information:  
Office of the University Ombudsperson  
129 N. Kedzie Hall  
(517) 353-8830  
ombud@msu.edu  
<https://www.msu.edu/unit/ombud/>

## Team Drew

Providing Comprehensive Support to Drew Scholars

### **Jerry Caldwell, PhD**

DIRECTOR

[jcaldwel@msu.edu](mailto:jcaldwel@msu.edu)

### **Dedra Eatmon, PhD**

ASSOCIATE DIRECTOR

[deatmon@cns.msu.edu](mailto:deatmon@cns.msu.edu)

### **Ariel Robbins**

ACADEMIC ADVISOR

[robbin53@cns.msu.edu](mailto:robbin53@cns.msu.edu)

### **Tylisha Brown, PhD**

ACADEMIC COACHING COORDINATOR

[tmbrown@msu.edu](mailto:tmbrown@msu.edu)

### **Patti Wolff**

ADMINISTRATIVE ASSISTANT

[wolffp@cns.msu.edu](mailto:wolffp@cns.msu.edu)

### **Sharon Griffin**

DREW MATH PROGRAM DIRECTOR

Office: A545 Wells Hall

[griffin@math.msu.edu](mailto:griffin@math.msu.edu)

### **John Urbance, PhD**

BIOLOGICAL SCIENCE PROGRAM

Office: 30 E. Holmes Hall

[urbance@msu.edu](mailto:urbance@msu.edu)

### **Charles Elzinga, PhD**

BIOLOGICAL SCIENCE PROGRAM

Office: 30 E. Holmes Hall

[elzingac@msu.edu](mailto:elzingac@msu.edu)



995 N. Brody Rd.  
C202 Rather Hall  
East Lansing, MI 48825  
517.353.8491

MICHIGAN STATE UNIVERSITY